

Additional Information

To Section 3.1 Reliability and durability

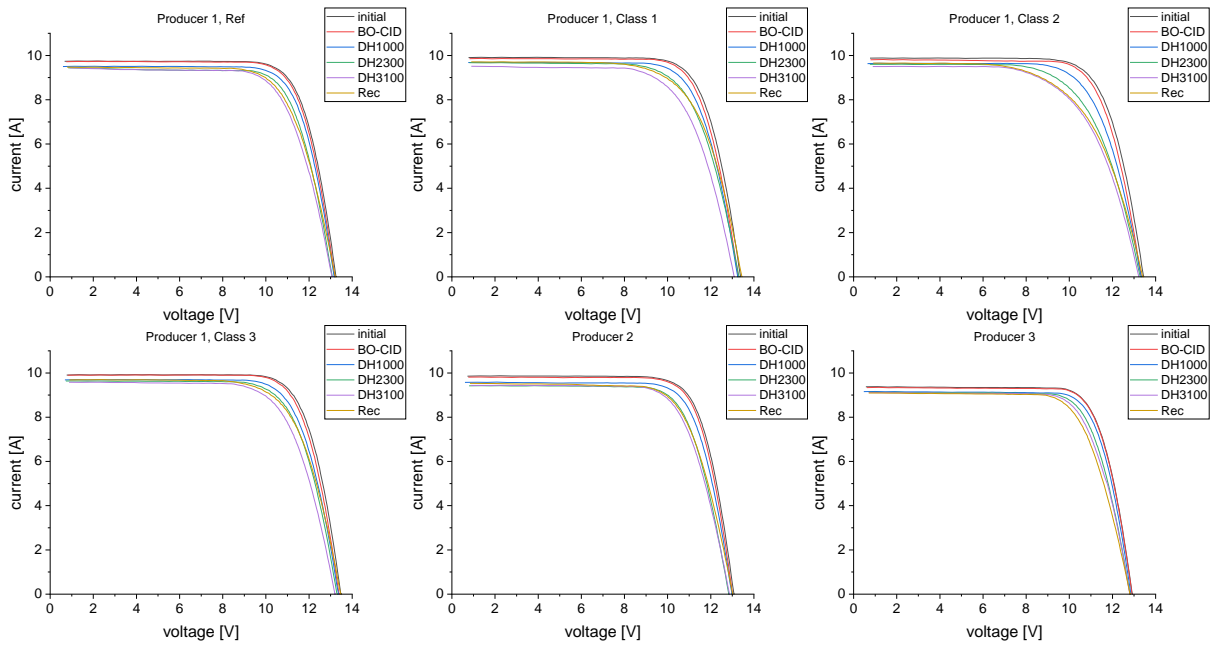


Figure A: Selected STC iv-curves from the damp heat test

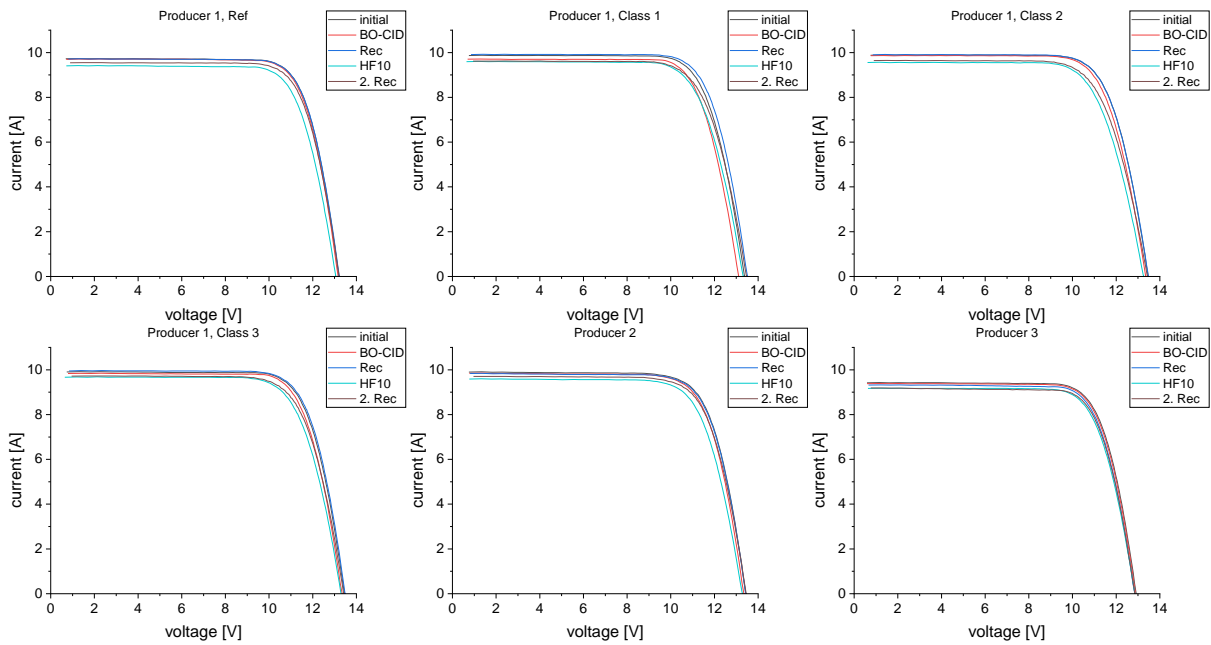


Figure B: Selected STC iv-curves from the sequential test

To Section 3.2 Power and Energy Yield

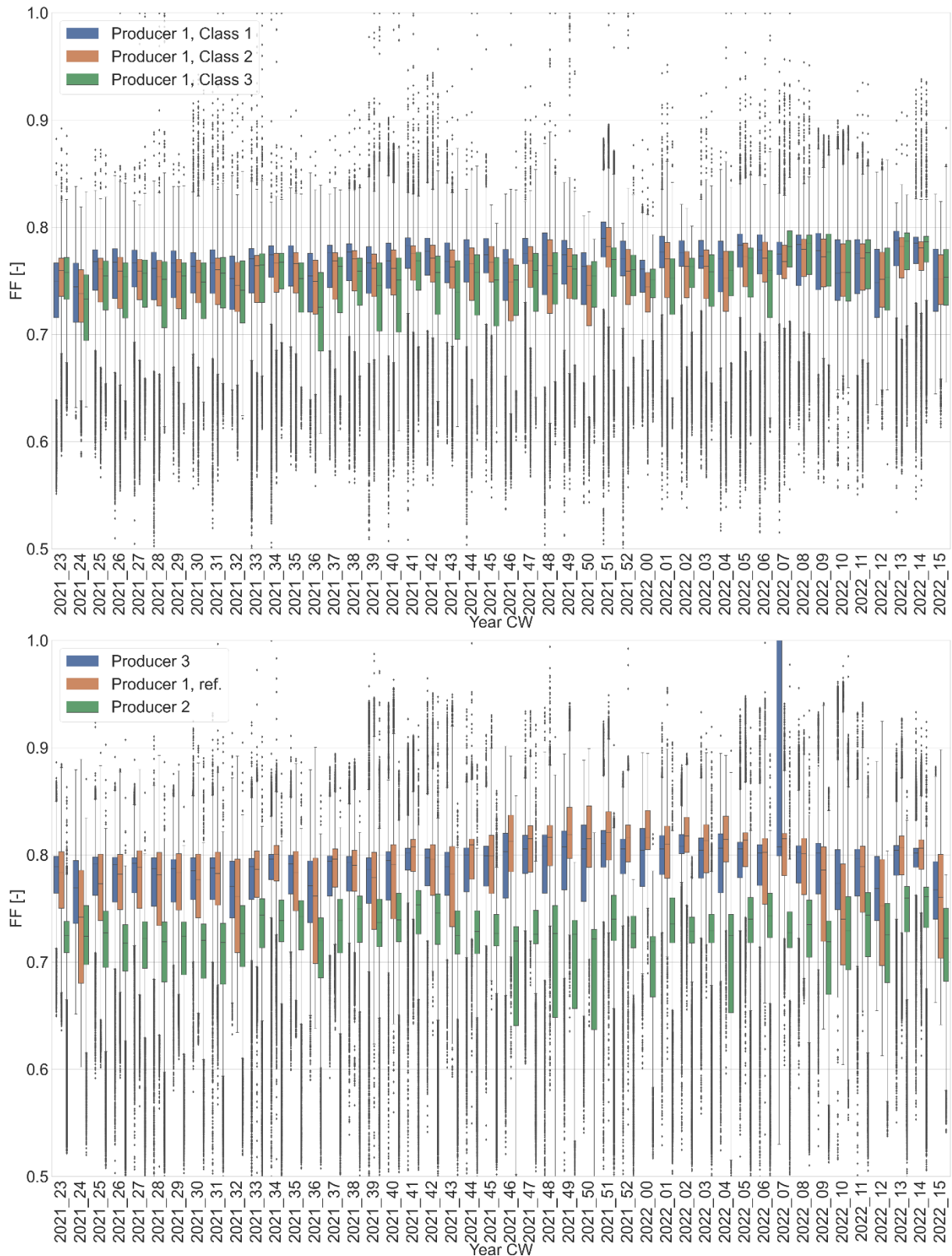


Figure C: Boxplots of fill factor (FF) per week and per module string; top: group 1; bottom: group 2

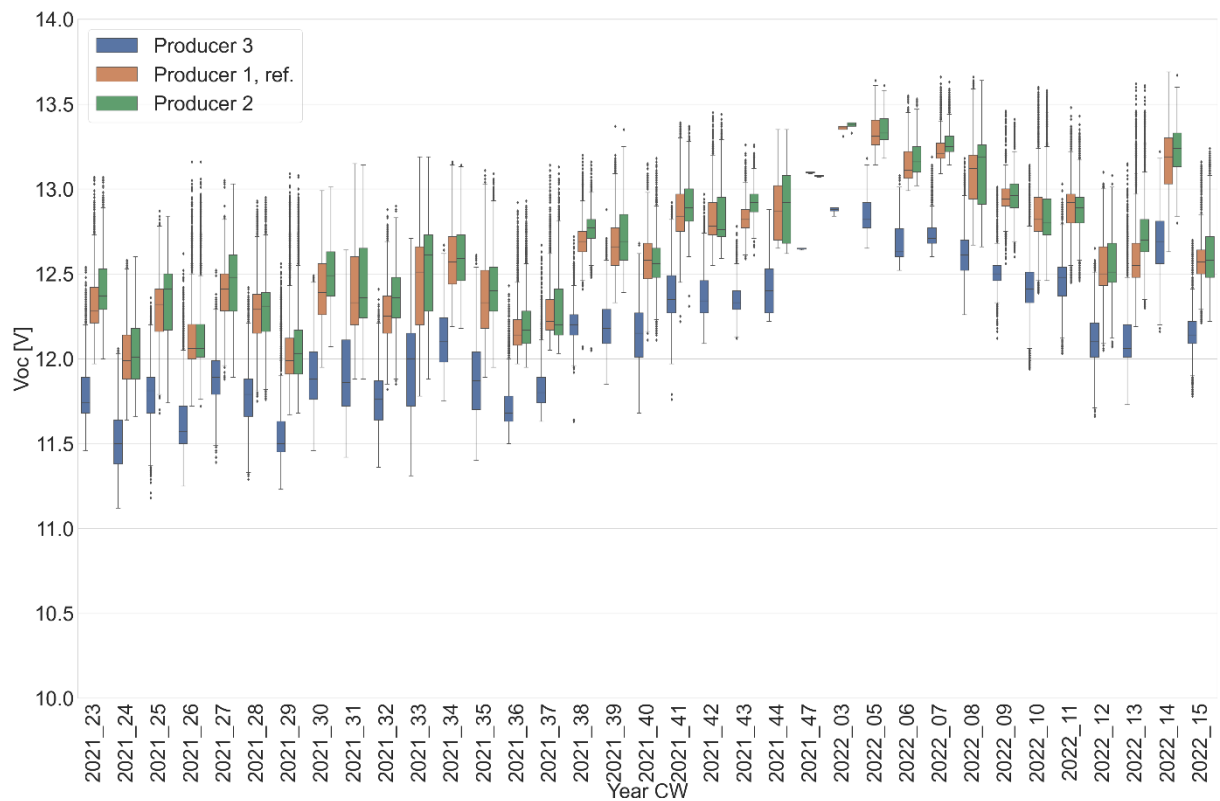
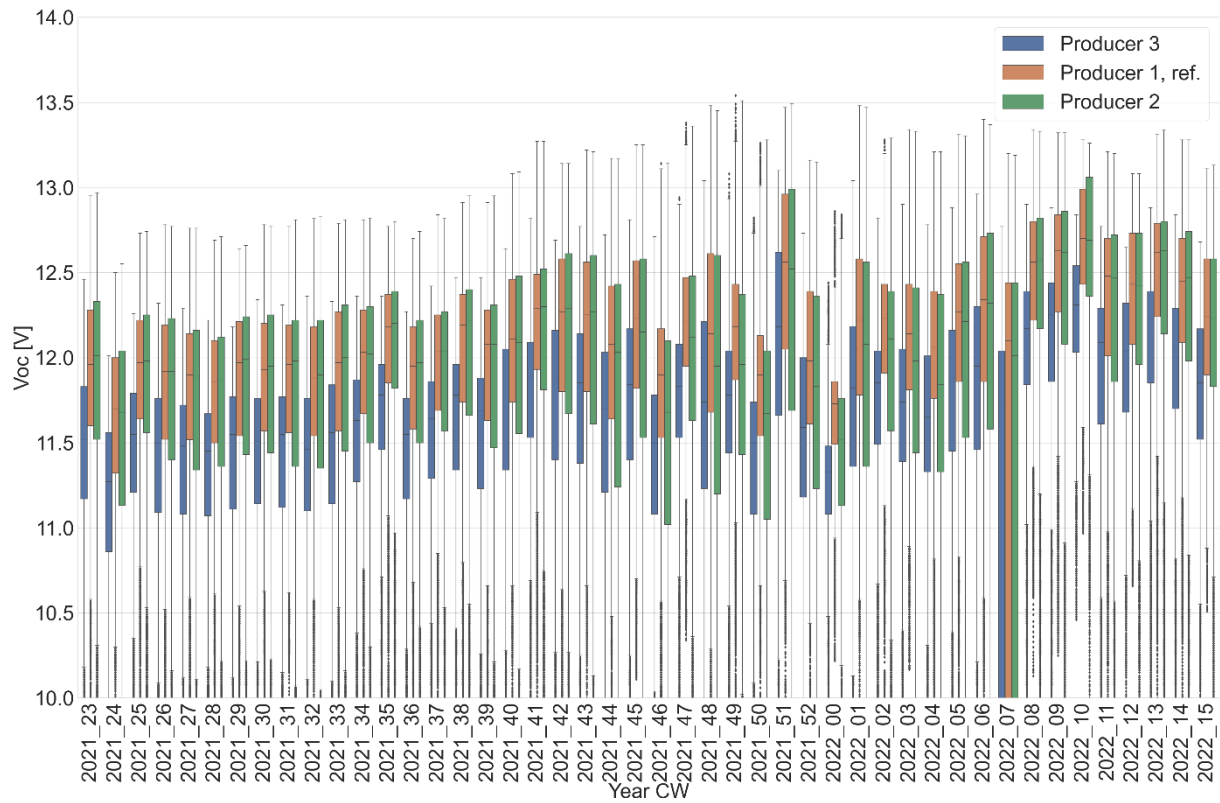
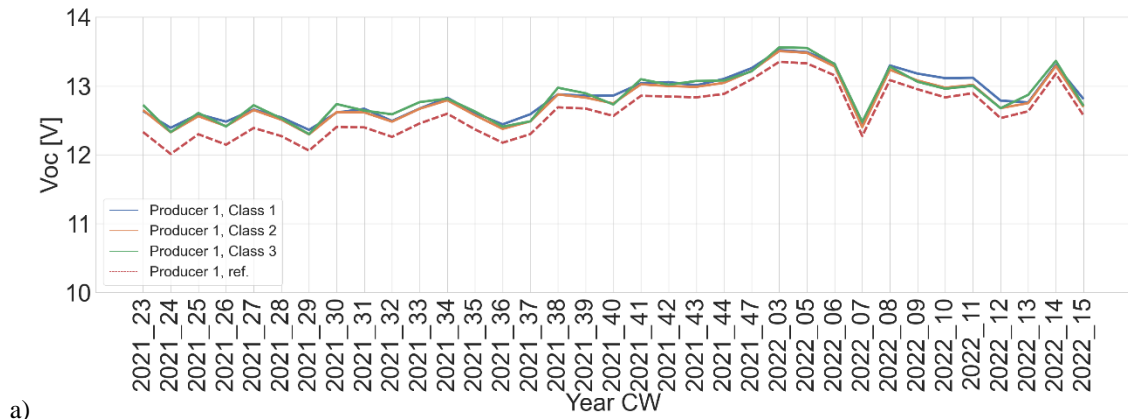
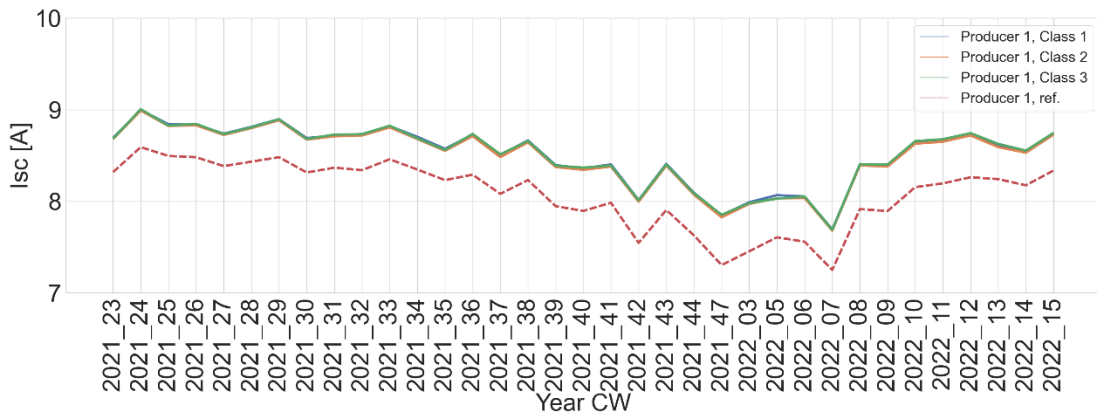


Figure D: Boxplots per week of Voc data per string of group 2; top: low light irradiances (below 400 W/m²); bottom: high irradiances (800 - 1000 W/m²)



a)



b)

Figure E: Lineplots of weekly mean from group 1 modules for high irradiances (800 - 1000 W/m²):
a) Voc, b) Isc

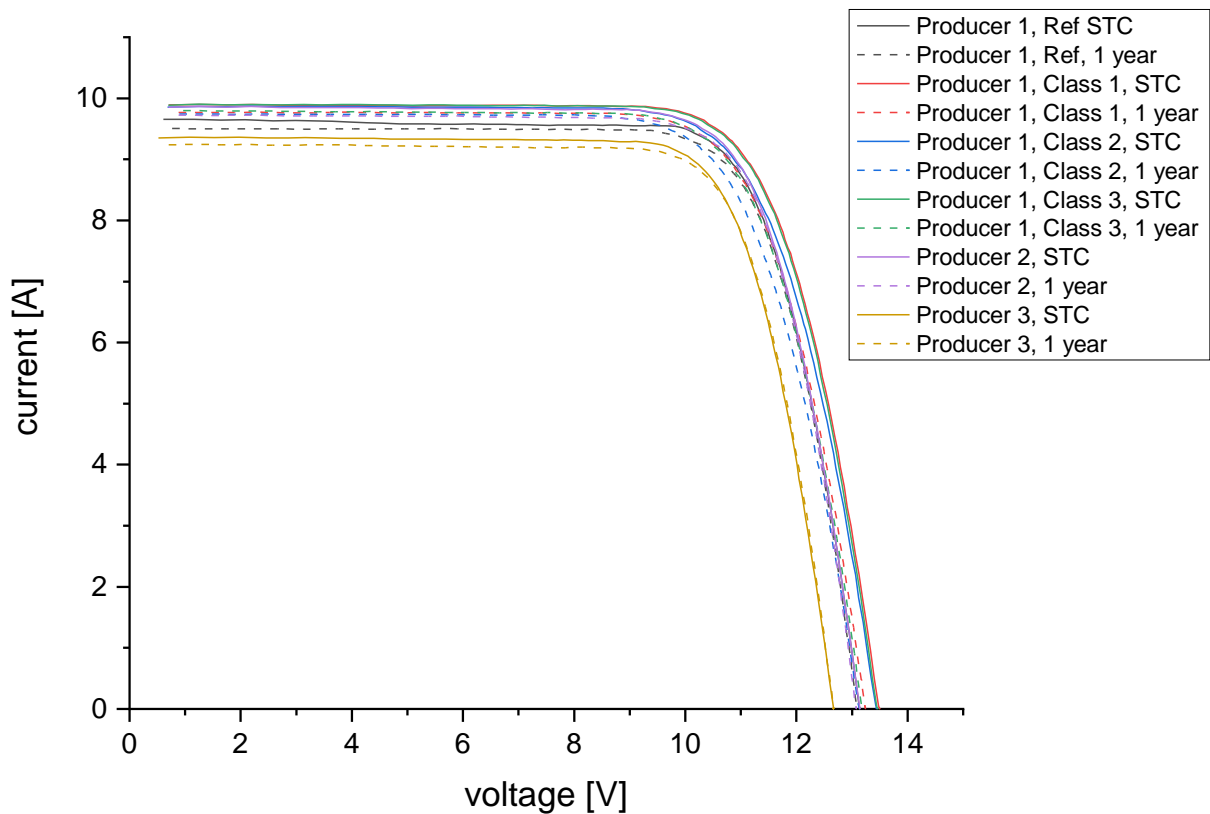


Figure F: Interim IV-curves at STC of LECO modules